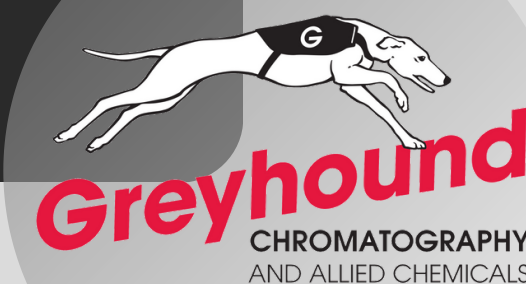


Range

GREYHOUND CHROMATOGRAPHY Q-RANGE™ EBOOK



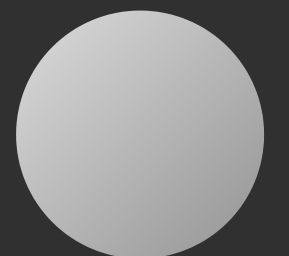
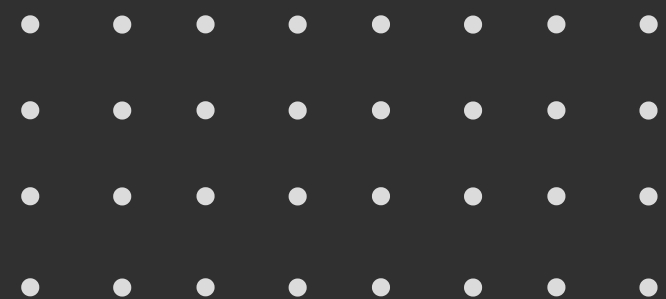
ABOUT GREYHOUND

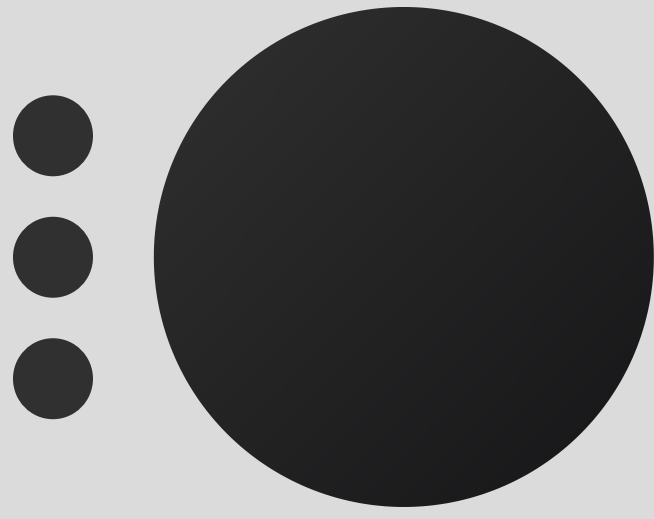


Greyhound Chromatography & Allied Chemicals was established in 1981 and is today a leading manufacturer and distributor of chromatography consumables, reference standards and chemicals to laboratories around the world. Working with clients directly from our offices in the UK or through our network of authorised distributors, you can be sure of finding products of the finest quality at highly competitive prices with prompt delivery times, all of which has made 'Greyhound' a leading global source of GC and LC products to the clinical, educational, pharmaceutical, environmental and industrial sectors. Greyhound offers over 1 million products making us the first choice when sourcing chromatography and chemical products.

Our customer focussed sales team can arrange shipments which meet with our clients specific requirements either as a single shipment or a regular call-off arrangement which ensures your products arrive the day before you need them so that work flow is never interrupted. As an ISO 9000:2015 accredited company the Greyhound team prides itself on the quality of its products and the service it provides to our clients.

Our quality procedures ensure our supply lines are continuously monitored so only the best service and support are provided. We are privileged to supply many of the worlds largest companies and international organisations as well as the smallest independent laboratories, each of which benefit from our individual customer support and technical assistance tailored to their specific requirements. It is our goal to provide each of our clients with the finest products, backed by an unrivalled level of customer service and support.



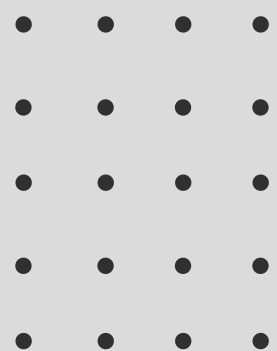


ABOUT THE Q-RANGE™

At Greyhound we offer our own range of products under the Q-Range brand name. This is broken down into 5 different sectors; Q-Range™, Q-Col™, Q-Clean™, Q-Cap™ and Q-Fil™.

All Q-Range™ products are manufactured to the highest specifications in the industry ensuring the products you receive will perform the task they are designed to do and that your analysis runs trouble free time after time.

As a trusted name in the supply of chromatography consumables and certified reference standards, Greyhound offer a comprehensive selection of top quality own brand HPLC columns, Capillary columns, HPLC pump spares, Autosampler and storage Vials, Membrane Filters and Certified Syringe Filters.





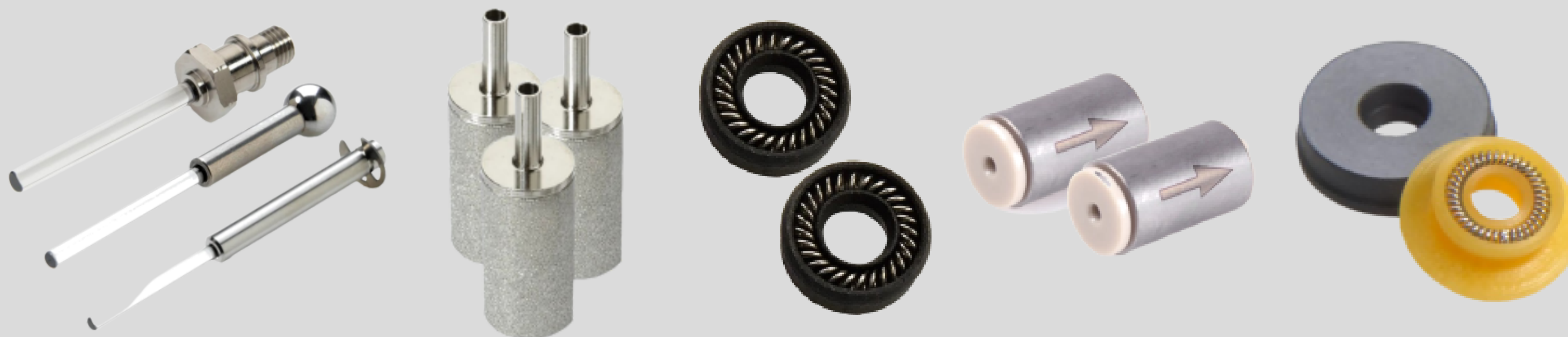
Q-RANGE™ HPLC PUMP SPARES



Whether you require a replacement check valve, seal, piston or other spare part, Greyhound offers an extensive range to fit all the leading brands of HPLC pumps. Every part is subject to rigorous inspection and quality control procedures to ensure that the parts you receive provide maximum performance and a long working life.

Greyhound Q-Range™ HPLC Pump Spares are manufactured to the highest specifications, matching the Original HPLC Pump Manufacturers (OEM) specifications, giving you peace of mind that when replacing the parts in your pump, your system will be up and running at maximum efficiency in no time and at a significant cost saving of up to 70% or more. By purchasing Greyhound Q-Range™ HPLC Pump Spares you can save not only on the cost of the replacement part(s) but by carrying out the routine maintenance yourself, you can also avoid the cost of calling on an HPLC pump engineer to fix a leaking seal or piston.

We do recommend, however, that all pumps undergo a scheduled maintenance every 1 or 2 years to ensure regulatory standards are met. Many laboratories use a range of different pump models in their laboratory, by using Greyhound Q-Range™ HPLC Pump Spares you can purchase all your parts from one single source along with your chromatography consumables and chemical requirements saving you even more time and money.



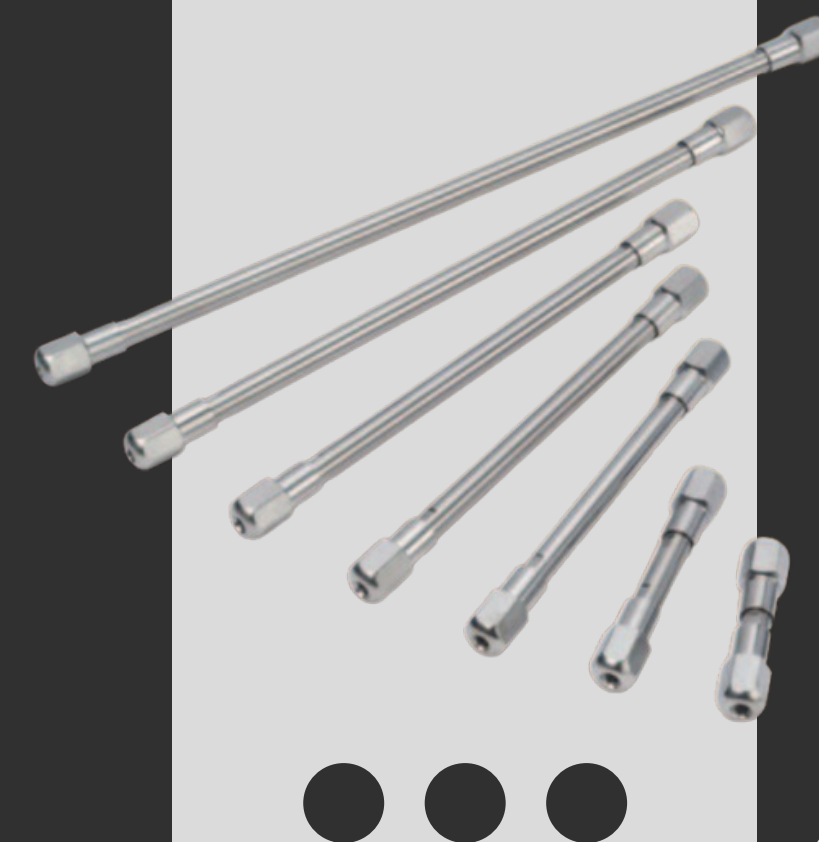
Q Col Q-COL™ HPLC COLUMNS

Our extensive range of HPLC columns and accessories are designed and manufactured to the most exacting and rigorous standards. Greyhound have been supplying HPLC columns and consumables for over 30 years, our experience places us in a unique position to offer advice and guidance when choosing the most suitable column for a particular analysis.

The manufacturing of our Q-Col™ silica is the first critical stage in the production of the high performance columns. Q-Col™ silica is ultra-pure, totally porous and perfectly spherical, the elimination of surface irregularities and extremely low metals content make it superior to other silica-based packings on the market.

The absence of micropores eliminate the chromatographic problems associated with incomplete substitution of the support, a problem found in other manufacturers packings. The manufacturing process of Q-Col™ silica, the bonding of the phase, right through to the packing and final testing of each column is monitored to meet the most demanding specifications in the industry and strict ISO 9001 procedures.

These rigorous processes result in columns of the highest quality, with longer lifespans and reproducible column-to-column results every time - with every column.



Q-Clean™ Q-CLEAN™ VIALS

Greyhound Q-Clean™ Vials are one of the most popular ranges of vials in the industry. Every box of vials manufactured and packaged can be identified with a Q-Clean™ label.

Q-Clean™ Vials are packed in a certified cleanroom immediately after passing through the annealing oven at approx. 600°C. These extremely hygienic conditions are pharmaceutical standard clean rooms, and the manufacturing and packaging process is the latest cleanliness standard for chromatography vials.

By selecting Q-Clean™ Vials for your analysis, you can be confident that the vials you are using are not just clean, but are free of micro contaminants to guarantee the highest levels of performance for your analysis.





Q-CLEAN™ CERTIFICATION LEVELS

Standard Certification - The entire Q-Range™ of vials and closures are manufactured under our strict ISO specifications ensuring the quality of every product gives trouble free results.

- All products are guaranteed defect free to ensure peak performance.
- Every lot is fully traceable throughout its manufacturing process.
- All Q-Range vials and closures are packaged under clean room conditions to ensure contaminant free products.

LC Certification - Our LC Certified vial kit provide the assurance of using particulate free vials for sample preparation.

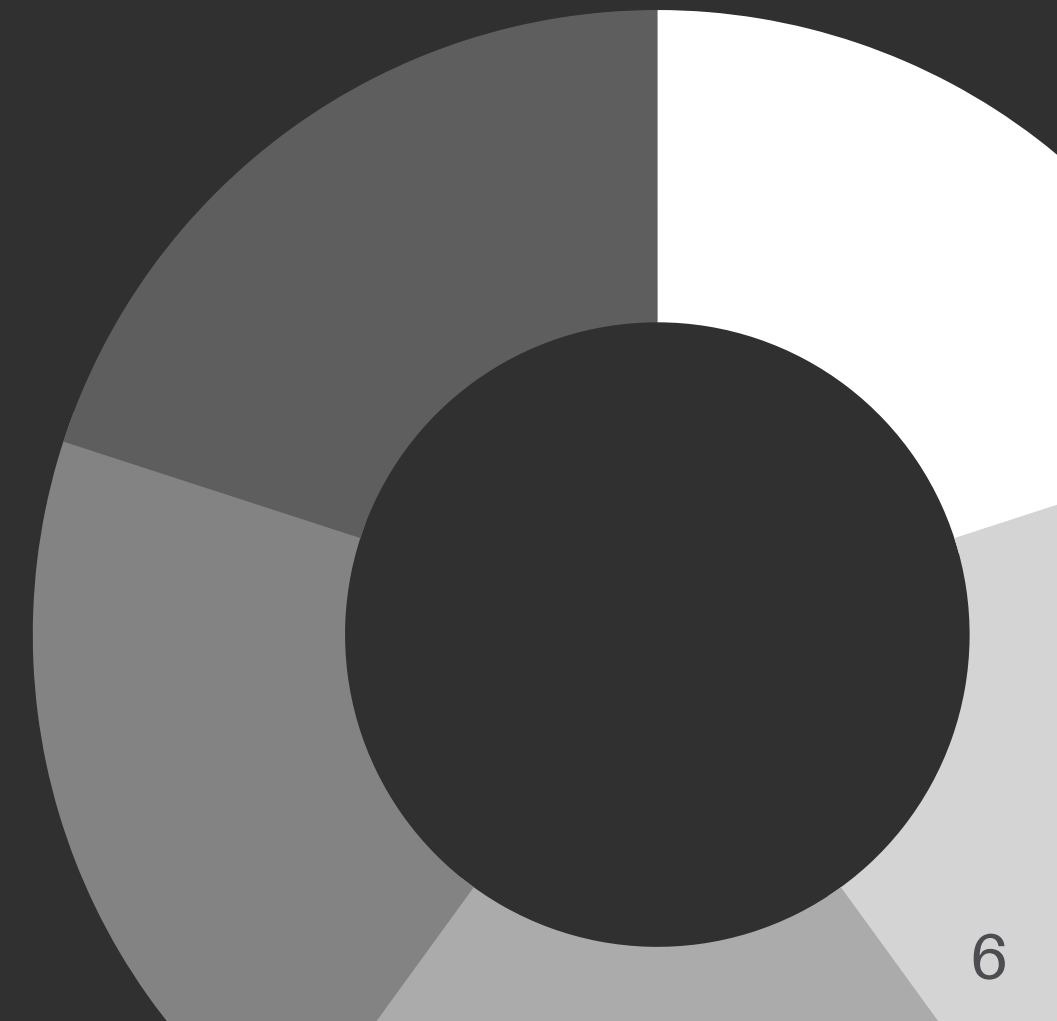
Certification includes testing for -

- Glass Quality
- Dimension accuracy
- Cap/Septa specifications
- Full chemical test by HPLC and GC

Mass Spec Certification - Our MS Certified Vial kits provide the assurance of using particulate free vials for sample preparation.

Certification includes testing for -

- Glass quality
- Dimension accuracy
- Cap Septa specifications
- GC/MS Background Test
- LC/MS Background Test
- Particle counts



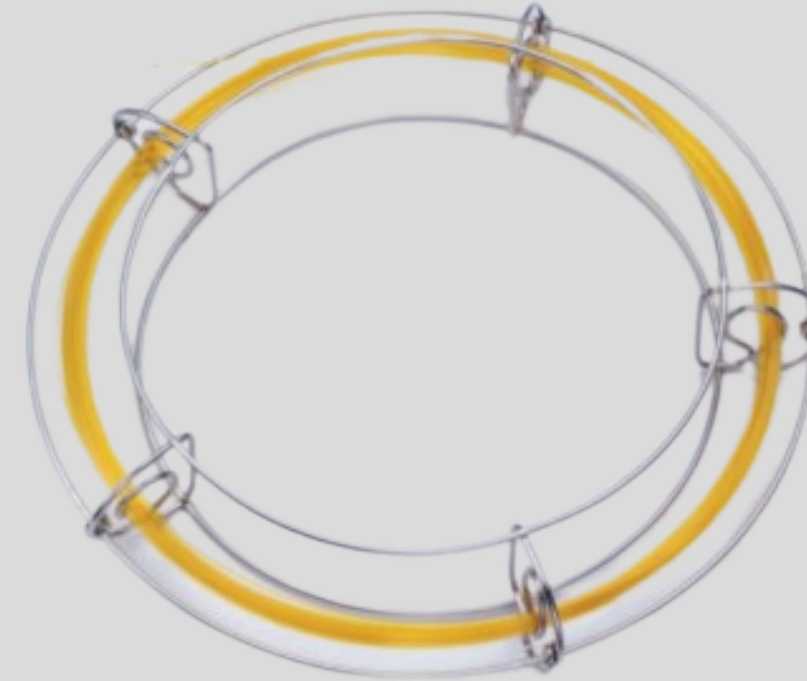


Q-CAP™ CAPILLARY COLUMNS

All Q-Cap™ capillary columns are manufactured under strict ISO 9001:2000 certified quality procedures, thus ensuring consistent reproducibility column after column. Every Q-Cap™ capillary column is individually tested to meet the most demanding performance standards, the results of which are detailed in the columns test report and installation guide.

Our extensive range of capillary columns are designed and manufactured to the most exacting and rigorous standards. Materials of the highest quality and attention to every detail of the manufacturing process, results in columns which ensure excellent and reproducible performance for even the most difficult types of samples.

Every stage of the manufacturing process, from the inertness of the highest quality fused silica tubing, the phase coating efficiency, film thickness, selectivity and low bleed characteristics of every column are all rigidly monitored. This attention to every details of the manufacturing process means you can be sure the column you purchase today will give you the same precise results as the one you purchased last year or will purchase next year.





Q-FIL™ SYRINGE FILTERS

Q-Fil™ **Syringe Filters** set the new Quality standard for today's laboratory syringe filters. Manufactured from the highest quality medical grade, high density polypropylene. Q-Fil™ Syringe Filters provide excellent chemical compatibility with acids, alcohols, bases, ethers, glycols, ketones and oils.

Every colour-coded filter is printed with details of the membrane material and its pore size on the outside of the filter and every box is labelled with the batch number making them ideal for traceability, GLPs and validation purposes.

Why use Greyhound Q-Fil™ Syringe Filters?

- Every box is supplied with a Certificate of Conformance to guarantee its batch to batch quality and performance
- The unique encapsulating process developed for these filters, forces the sample to pass only through the membrane, thus avoiding the possibility of leaks or contamination
- Available in the most popular sizes, porosities and membrane types
- Excellent resistance to all routinely used HPLC solvents
- Filter housings are manufactured from the highest quality medical grade, high density polypropylene
- Extremely low level of extractables for highly sensitive work
- Luer connections fully comply with ISO 594-1



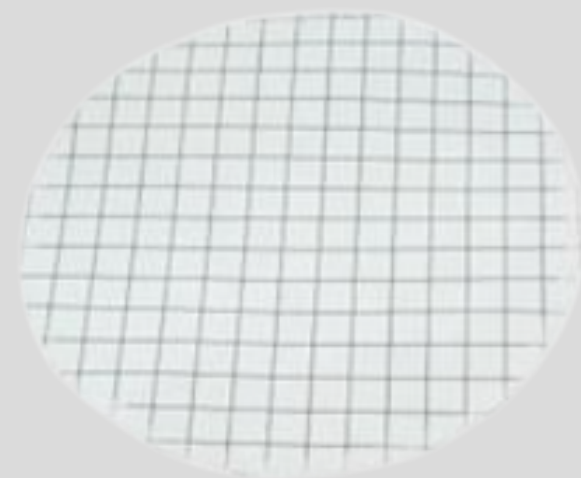


Q-FIL™ MEMBRANE FILTERS

Q-Fil™ Membrane Filters set the new Quality standard for today's analytical laboratories. Manufactured from the highest quality materials, Q-Fil™ Membrane Filters provide excellent chemical compatibility with acids, alcohols, bases, ethers, glycols, ketones and oils.

Greyhound Q-Fil Membrane Filters are one of the worlds most popular ranges of Membrane Filters for environmental, industrial, water, food, chemical and biotechnology laboratories.

These high quality membranes are manufactured to the highest specifications to meet the varying requirements of the scientific community.



CATALOGUE DOWNLOADS

Q-Range™ HPLC Pump Spares



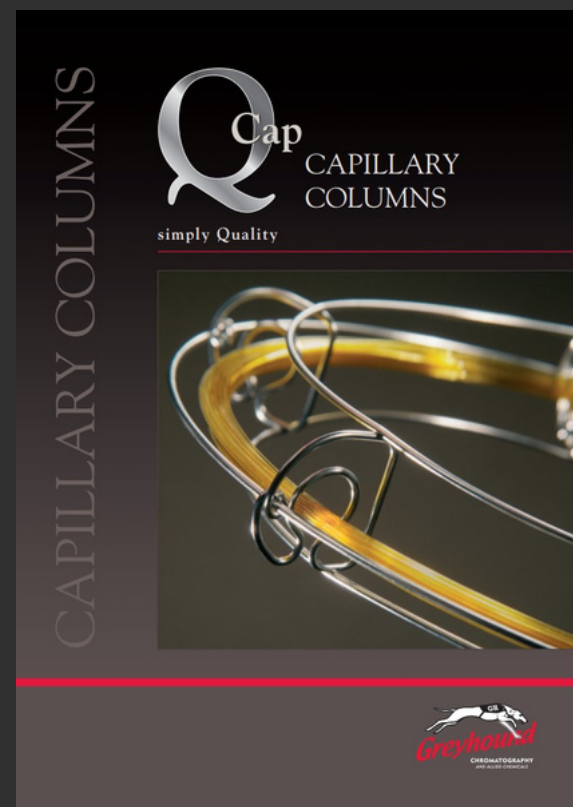
Q-Col™ HPLC Columns



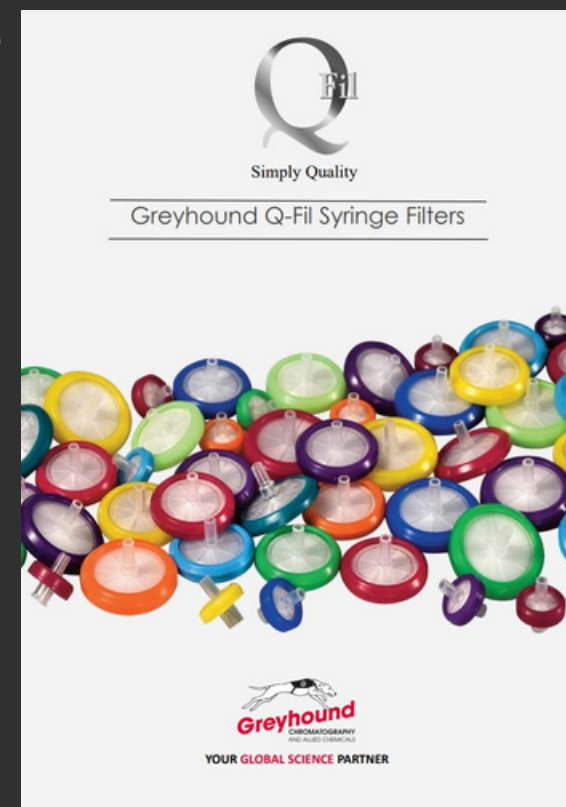
Q-Range™ Vials, Caps and Septa



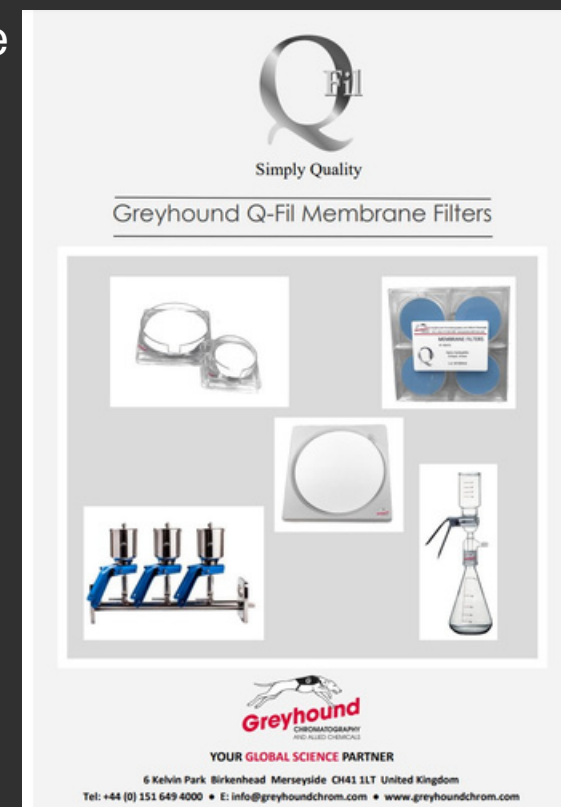
Q-Cap™ Capillary Columns



Q-Fil™ Syringe Filters



Q-Fil™ Membrane Filters



CATALOGUE DOWNLOADS

Q Range™
Simply Quality

**PFAS VIALS & CAPS
SCREW TOP / SNAP TOP**




PFAS Analysis approved
Highest Quality Materials
Maximum PFAS Recovery Rates
Performance Guaranteed

Greyhound
Chromatography and Allied Chemicals
YOUR GLOBAL SCIENCE PARTNER

6 Kelvin Park Birkenhead Merseyside CH41 1LT United Kingdom
Tel: +44 (0) 151 649 4000 • E: info@greyhoundchrom.com • www.greyhoundchrom.com

PFAS Vials & Caps

**Complete Guide to the
Merlin Microseal™
for Gas Chromatography**




Greyhound
Chromatography and Allied Chemicals
YOUR GLOBAL SCIENCE PARTNER

6 Kelvin Park Birkenhead Merseyside CH41 1LT United Kingdom
Tel: +44 (0) 151 649 4000 • E: info@greyhoundchrom.com • www.greyhoundchrom.com

Guide for Merlin Microseal

Greyhound
Chromatography and Allied Chemicals

HPLC PUMPS
The New Generation has arrived!

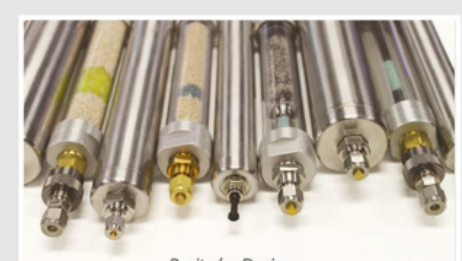


Greyhound
Chromatography and Allied Chemicals
YOUR GLOBAL SCIENCE PARTNER

6 Kelvin Park Birkenhead Merseyside CH41 1LT United Kingdom
Tel: +44 (0) 151 649 4000 • E: info@greyhoundchrom.com • www.greyhoundchrom.com

HPLC Pumps

ZPure™
Gas Purifiers and Filters



Purity by Design

Greyhound
Chromatography and Allied Chemicals
YOUR GLOBAL SCIENCE PARTNER

6 Kelvin Park Birkenhead Merseyside CH41 1LT United Kingdom
Tel: +44 (0) 151 649 4000 • E: info@greyhoundchrom.com • www.greyhoundchrom.com

ZPure Gas Purifiers & Filters

Greyhound
Chromatography and Allied Chemicals

VIAL CRIMPERS / DECAPPERS
The New Ergonomic Generation has arrived!




Greyhound
Chromatography and Allied Chemicals
YOUR GLOBAL SCIENCE PARTNER

6 Kelvin Park Birkenhead Merseyside CH41 1LT United Kingdom
Tel: +44 (0) 151 649 4000 • E: info@greyhoundchrom.com • www.greyhoundchrom.com

Vial Crimpers & Decappers

Greyhound
Chromatography and Allied Chemicals

**Premium & General Purpose
GC SEPTA**



The Greyhound Chromatography range of Premium GC Septa are precision-moulded and available with a recess on the injection side, to guide the syringe needle to the same point with every injection. The Centre Guide design requires less force for initial penetration for a smoother feel. Septum life may be enhanced in some applications by minimizing tearing and coring.

- Centre point guides the needle for easy penetration
- Reduces needle bending
- Precision moulding assures accurate fit
- Packaged in glass jars for high purity

BTO Septa - are Bleed and Temperature Optimized for the most demanding GC and GC-MS applications. It is the finest GC septum available. Septa BTO is formulated to extend low bleed and outstanding mechanical properties of premium GC septa to the highest-temperature applications. It retains remarkable softness and pierceability at high temperatures, with extremely low bleed, and has been optimized to reduce injection port adhesion. Max. Temp. 400°C.

Marathon Septa - are an advanced GC septum for autosampler use, with significantly longer life. The Marathon septum typically achieves 400 injections without failure when used with a rounded tip (RP-style) needle and autosampler or needle guide. Now you can make extended autosampler runs without fear of sample loss caused by blow-back of leaking carrier gas. The Marathon septum is also ideal for standard manual injection GC and GC-MS. Max. Temp. 350°C.


Advanced Green Septa - combine significantly longer injection life, low bleed and low injection port adhesion. The result is a green septum highly suitable for use with all critical analyses. Max. Temp. 350°C.

Greyhound Chromatography & Allied Chemicals
6 Kelvin Park, Birkenhead, Wirral, Merseyside, CH41 1LT
Tel: (+44) 0 151 649 4000 Email: sales@greyhoundchrom.com www.greyhoundchrom.com

GC Septa

Greyhound
Chromatography and Allied Chemicals

GC FERRULES & SEALS



Greyhound Chromatography supplies the most extensive range of ferrules available from any single supplier, manufactured from VespeI®, VespeI/Graphite, Graphite and PTFE. The ferrule size refers to the size of the compression fitting and the OD of the tubing to be used.

VespeI® Ferrules - are made from 100% high-temperature DuPont polyimide with precision drilled ID. VespeI is fairly hard and tends to seal permanently to the column.

VespeI®/Graphite (60% VespeI/40% Graphite) Ferrules - are made from quality DuPont polyimide/graphite blend. Recommended for GC/MS interface applications.

Graphite Ferrules - are made from high purity graphite. Ideal for glass to metal connections because they don't stick to glass. They are reusable, if they are not over tightened.

VespeI®/Graphite (85% VespeI/15% Graphite) Ferrules - are made from quality DuPont polyimide/graphite blend. Recommended for GC/MS interface applications.

PTFE Ferrules - are made of 100% PTFE. They are soft and completely inert.

Greyhound Chromatography & Allied Chemicals
6 Kelvin Park, Birkenhead, Wirral, Merseyside, CH41 1LT
Tel: (+44) 0 151 649 4000 Email: sales@greyhoundchrom.com www.greyhoundchrom.com

GC Ferrules & Seals

CONTACT US



CALL
+44 (0) 151 649 4000



WEBSITE
www.greyhoundchrom.com



EMAIL
sales@greyhoundchrom.com



COMPANY ADDRESS
6 Kelvin Park, Wallasey, Birkenhead CH41 1LT